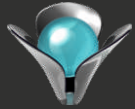




TUANA GLASSMOLD

“Perfect Molds”





TUANA GLASSMOLD

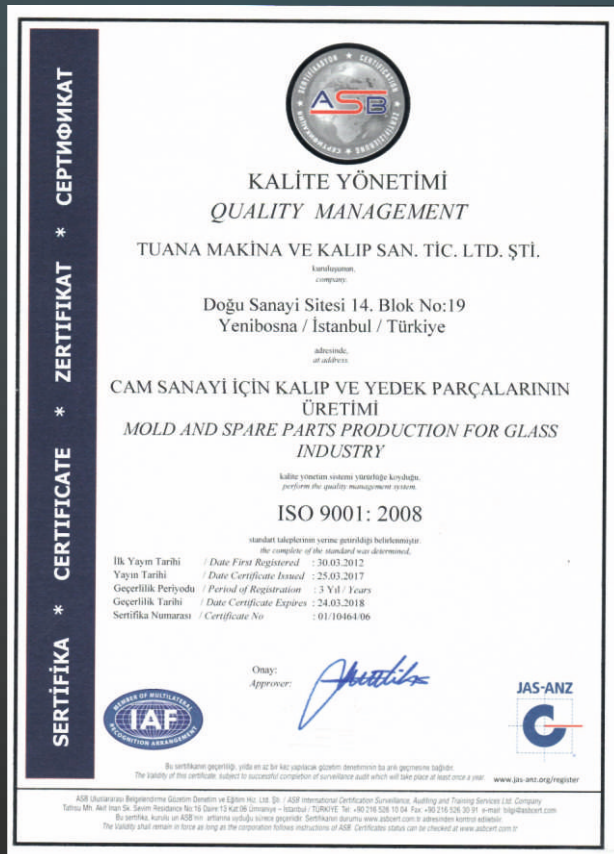
ABOUT US

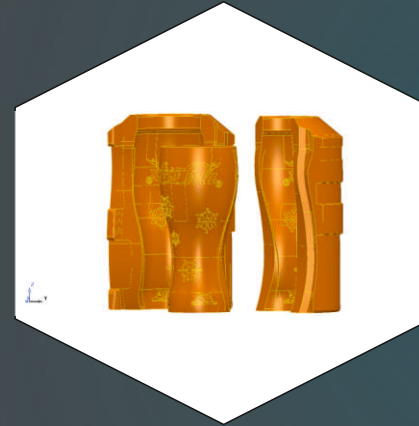
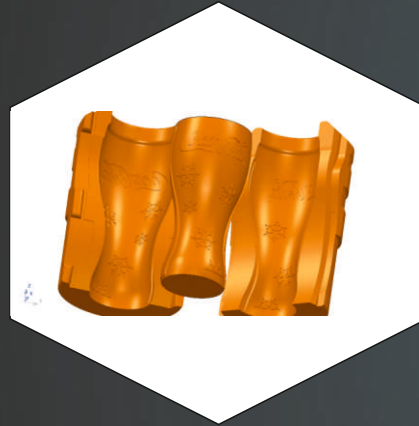
Tuana, which entered into the market through serving in tire sector at first step, started to operate in glass sector in the middle of 1980s. As well as our country has showed improvement in field of industry and technology we have been one of advanced companies in sector of glassmold manufacturing. At present we provide a big amount of glassware products' molds belonging to Gürallar Group. At the same time, 70 percent of the molds used in IS Project that Gürallar Group started in 2014 are produced by Tuana. Apart domestic market, we especially export to Iran and European countries.

Tuana produce high quality molds with highly trained operator and experienced engineer team. With modernist and analytical approach Tuana give an undertaking to supply perfect molds and customer satisfaction. Our mission is giving superior products to our domestic and abroad customers as a company that is famous with qualified glassmolds.

QUALITY

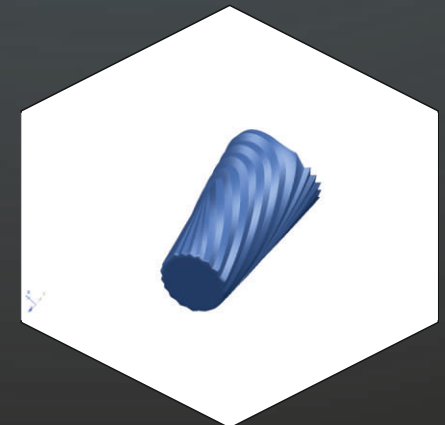
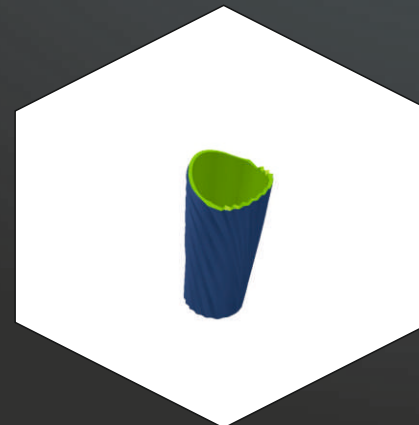
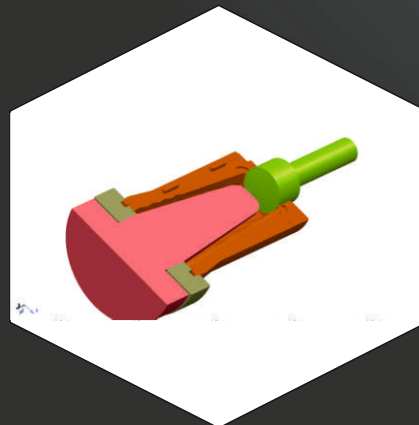
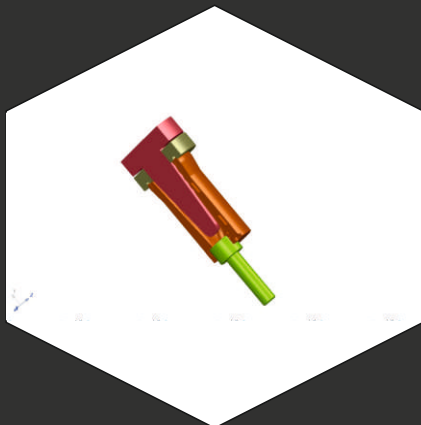
As known, quality and check is very important point for various aspects of manufacture .Especially for glassmolds it is extremely important for precision.By the way we pay attention to clarify the results of production and correct the mistakes.While doing this we also benefit from quality management systems.Step by step we are restoring and improving our manufacture and management processes with quality management.





DESIGN

With experienced team Tuana supplies design support to the customers. In order to minimize design mistakes our team works precisely. As well as we do 3D or 2D solutions and CAD&CAM applications, in case of need we can help about reverse engineering and prototyping.





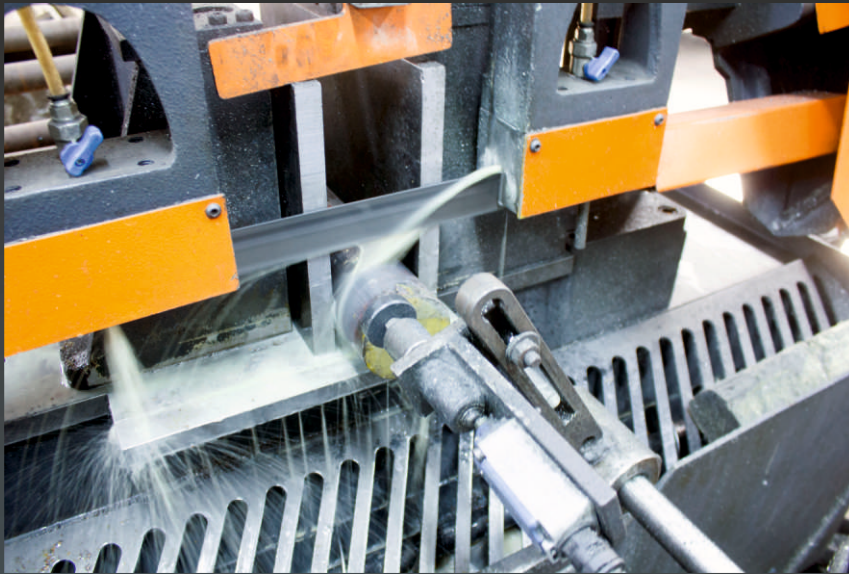
TUANA GLASSMOLD

MANUFACTURE

Tuana's production line is equipped with mostly Japan origin CNC high-speed machining centers, CNC turning centers and CNC tapping center. Other required operations before machining and after machining are also done by own equipments and operators like polishing, welding.

As mold material, Tuana uses high quality stainless steel or cast iron that changes according to mold type. For welding Tuana uses cobalt based welding rod for split surfaces and welding powder for coating surfaces. Other than these, all the equipments required for preparation processes like polish, welding, material cutting are available on production area.



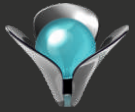




TUANA GLASSMOLD

PRESS AND BLOW MOLDS

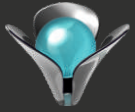




TUANA GLASSMOLD

IS MOLDS



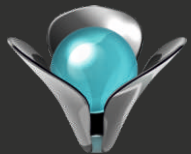
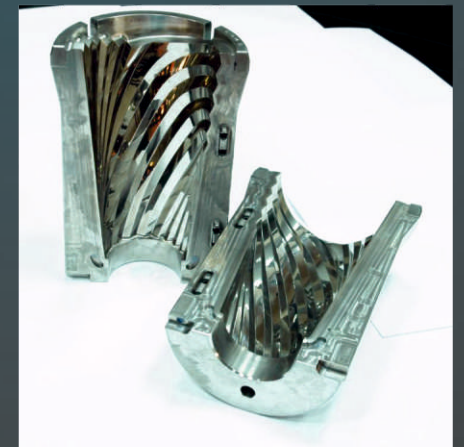
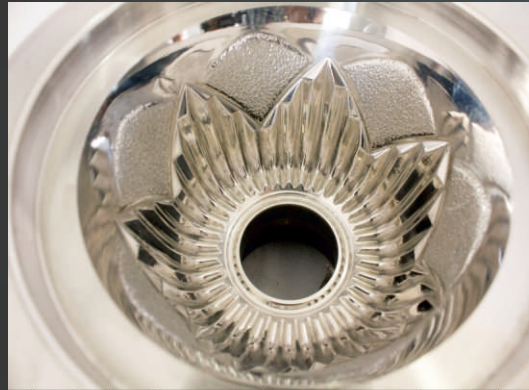


TUANA GLASSMOLD

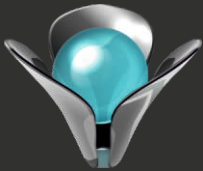
PRESS MOLDS



PRESS MOLDS



TUANA
GLASSMOLD



TUANA GLASSMOLD

Dođu Sanayi Sitesi 14 Blok No:19 Yenibosna - İstanbul
Telefon: +90 212 552 12 98 Faks: +90 212 652 62 96
www.tuanaglassmold.com • info@tuanaglassmold.com